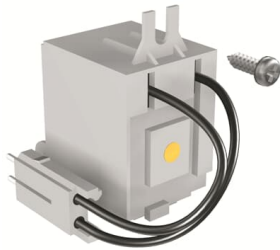




PRODUCT-DETAILS

SOR-C A1-A2 220-240Vac-220-250Vdc

SOR-C A1-A2 220-240Vac-220-250Vdc



General Information

| | |
|-----------------------|---|
| Extended Product Type | SOR-C A1-A2 220-240Vac-220-250Vdc |
| Product ID | 1SDA066137R1 |
| EAN | 8015644691325 |
| Catalog Description | SOR-C A1-A2 220-240Vac-220-250Vdc |
| Long Description | SHUNT OPENING RELEASE WIRED 220...240V AC-220...250V DC A1-A2 |

Environmental

| | |
|---------------------------|-----------------|
| Environmental Information | 9AKK108467A6707 |
|---------------------------|-----------------|

Material Compliance

| | |
|---|--|
| REACH Declaration | 9AKK108466A1425 |
| RoHS Information | 9AKK108466A1424 |
| RoHS Status | Following EU Directive 2011/65/EU and Amendment 2015/863 July 22, 2019 |
| Conflict Minerals Reporting Template (CMRT) | 9AKK108467A5658 |
| Toxic Substances Control | 9AKK108467A8326 |

Act - TSCA

Ordering

| | |
|--------------------------|---------------|
| Order Code US and Canada | KA2S2 |
| EAN | 8015644691325 |
| Minimum Order Quantity | 1 piece |
| Customs Tariff Number | 85389099 |

Dimensions

| | |
|--------------------|----------|
| Product Net Weight | 0.109 kg |
|--------------------|----------|

Container Information

| | |
|--------------------------------|---------------|
| Package Level 1 Units | 1 piece |
| Package Level 1 Width | 28.6 mm |
| Package Level 1 Height | 136 mm |
| Package Level 1 Depth / Length | 107 mm |
| Package Level 1 Gross Weight | 0.115 kg |
| Package Level 1 EAN | 8015644691325 |

Additional Information

| | |
|-------------------|-------------------------|
| Product Main Type | Accessories for FORMULA |
| Product Name | Accessory |
| Product Type | ACC |
| Suitable For | A1, A2 |

Technical

| | |
|---------------------------------|--------------------------------------|
| Configuration Type | Loose or configurable |
| Current Type | AC/DC |
| Rated Voltage (U _r) | 220 ... 240 V AC 220 ... 250 V DC |
| Standards | IEC |

Certificates and Declarations

| | |
|-----------------------------------|---|
| Data Sheet, Technical Information | 9AKK105713A5945 |
| Declaration of Conformity - CE | Refer to the EU Declaration of the relative Circuit Breaker |
| Instructions and Manuals | 1SDC210032D0204 |

Classifications

| | |
|----------------------------|--|
| ETIM 8 | EC002483 - Switch spool for power circuit breaker |
| ETIM 9 | EC002483 - Switch spool for power circuit breaker |
| Object Classification Code | Q |
| WEEE Category | 5. Small Equipment (No External Dimension More Than 50 cm) |
| eClass | V11.1 : 27370421 |

Categories

Low Voltage Products and Systems → Circuit Breakers → Moulded Case Circuit Breakers → Accessories for Formula DSA

